



MOWER ACCESSORIES & ATTACHMENTS CATALOG



2025

Ordering is Easy

Contact Your Local Dealer

Altoz quality is defined by superior components working in unison to deliver intuitive and responsive mowers with a professional-grade cut to get even your toughest jobs done with speed and power.

TSX / TRX Deck Kit

HV All-Terrain Deck – Heavy-duty, fabricated, reinforced steel deck with six swing blades and sloped back rear discharge design that efficiently processes material.

Series		p/n
TRX	610 models (61")	2500309
	660 models (66")	2500490
	766 models (66")	
TSX	561 models (61")	2500681

Aero Deck™ Finish Deck – High output cutting and side discharge deck features heat-dissipating spindles and adjustable baffles for a professional cut.

Series		p/n
TRX	610 models (61")	2500311
	660 models (66")	2500491
	766 models (66")	
TSX	561 models (61")	2500682



HV All-Terrain Deck - Bottom View



Aero Deck™ Finish Deck

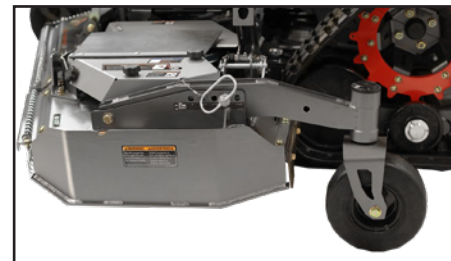
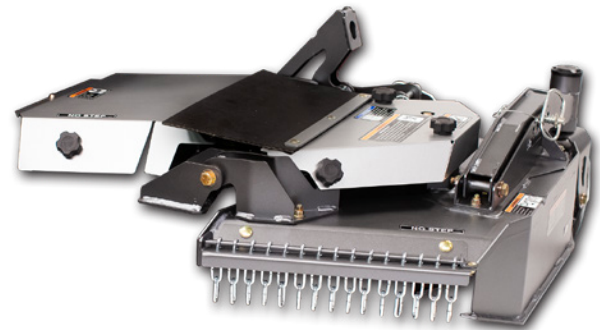
Deck Wing Extension **NEW**

Take your mowing capabilities to the next level with this innovative attachment, designed to work seamlessly with your 66" deck. Gain 25% more coverage and significantly reduce man hours when tackling larger, open areas and areas you could not cut with other equipment.

- Adds 16" of additional cutting width (82" total), increasing productivity and reducing cut time.
- Wing flexes up to follow contour of the ground.
- Features a large-diameter, flat-free, rear swivel guide wheel with greasable bearing.
- Locking transport position to reduce width while trailering (clutch should NOT be engaged when wing is in transport position).
- Greaseable steel deck spindle with low-lift, hardened steel straight blade for durability.
- Spindle guard protects spindle bearing and seal from grass wrapping, for increased spindle life.

Application: Mounts on left hand side of deck on all TRX 766 All-Terrain decks with removable side inspection plates.

Series		p/n
TRX	766 models - All-Terrain decks with removable side inspection plates.	2530000



Deck Wing Extension - Side View

Counter Rotation RH Deck Spindle Kit

The Altoz TRX 766 i Counter Rotation RH Deck Spindle Kit enhances your 2025 All-Terrain deck by increasing efficiency and productivity.

- Increases cutting efficiency by processing material more effectively using less horsepower, resulting in less fuel consumption and longer belt life.
- Improved cut quality and better disbursement of cut material.
- Double-edged blades can be rotated between spindles for longer blade life.
- Fast and easy installation - the deck is pre-drilled for fast, easy kit attachment.
- Kit includes all components for conversion to counter rotating right spindle.
- Can be used with deck wing extension kit.

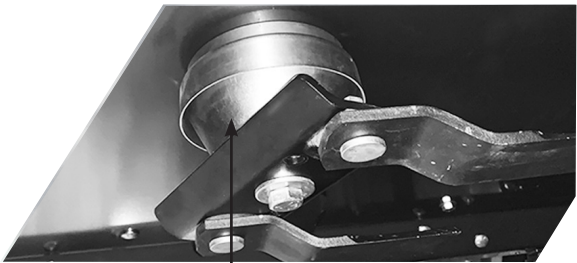


Series		p/n
TRX	766 models	2500804

Spindle Guard Kit

The spindle guard kit protects the mower deck spindles and helps prevent debris from wrapping around the spindles. Available for TSX and TRX HV All-Terrain deck mowers. One kit is needed for each deck.

Series		p/n
TSX / TRX HV All-Terrain	561 / 766 models	2500715



Spindle Guard Installed

TerraFlex™ Tracks **NEW**

TerraFlex commercial-grade tracks are forged from molded all-natural vulcanized rubber around continuous steel cables, ensuring unparalleled strength and flexibility for durability in rough terrain. The tread patterns are engineered for traction, stability and a smooth ride in challenging conditions. The interior drive side is engineered for flexibility.

Part number shown is for a single track. Two tracks needed for each mower.

TerraFlex AT Track

Series		p/n
TRX 766	<i>TerraFlex Track only (2025 models)</i>	5500107
TRX/TSX 561	<i>Terra Flex AT Track (2025 models)</i>	5500106

TerraFlex Turf Track

Series		p/n
TRX 766	<i>TerraFlex Turf Track (2025 models)</i>	5500123
TRX / TSX	<i>561 models (2025 models)</i>	5500128



TerraFlex™ AT Tracks



TerraFlex™ Turf Tracks

Tracks

Turf Tracks - Less aggressive and better for soft ground, rolling hills and sensitive terrain.

Part number shown is for a single track. Two tracks needed for each mower.

Series		p/n
TRX / TSX	<i>354 models</i>	5500037
	<i>561 models (2024 and prior models w/o TerraFlex Update Kit)</i>	5500039

All-Terrain Tracks - Ideal for hills, mud and rough areas other mowers can't reach.

Part number shown is for a single track. Two tracks needed for each mower.

Series		p/n
TRX / TSX	<i>354 models</i>	5500054
	<i>561 models (2024 and prior models w/o TerraFlex Update Kit)</i>	5500055



Turf Tracks
(shown installed)



All-Terrain Tracks
(shown installed)

TerraFlex™ Tracks and Sprockets **NEW**

Convert the tracks and sprockets to TerraFlex tracks and sprockets. Note that when selecting this option, the tracks might rub against the guide rail.

Series		p/n
TRX 610	<i>TerraFlex AT Track Conversion Kit (includes 2 tracks and sprockets)</i>	2500832
	<i>TerraFlex AT Track only (each)</i>	5500107
	<i>Sprocket Set (set of 2)</i>	2001710
TRX 660/766 (2024 & Prior)	<i>TerraFlex AT Track Conversion Kit (includes 2 tracks and sprockets)</i>	2500777
	<i>TerraFlex AT Track only (each)</i>	5500107
	<i>Sprocket Set (set of 2)</i>	2001656



TerraFlex™ Tracks, Sprockets and Axles Conversion Kits **NEW**

Convert the track system on a previous model to the TerraFlex AT Tracks. All parts needed for conversion are included in the conversion kit.

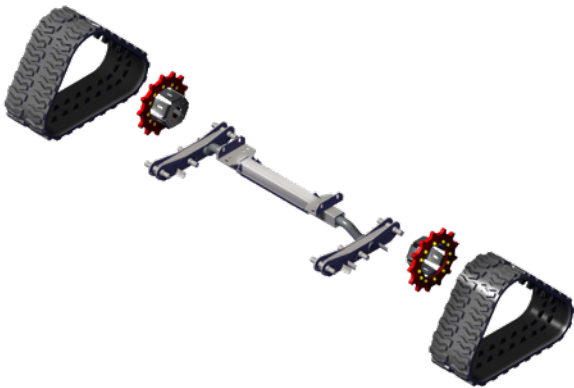
Series		p/n
TRX 561 (2024 & Prior)	<i>TerraFlex AT Track Conversion Kit (includes 2 tracks, Sprocket Set and shorter axles)</i>	2500869
	<i>TerraFlex AT Track only (each)</i>	5500106
	<i>Sprocket Set and Axles</i>	2001784
TRX 610	<i>TerraFlex AT Track Conversion Kit (includes 2 tracks, Sprocket Set and shorter axles)</i>	2500870
	<i>TerraFlex AT Track only (each)</i>	5500107
	<i>Sprocket Set and Axles</i>	2001260
TRX 660	<i>TerraFlex AT Track Conversion Kit (includes 2 tracks, Sprocket Set and shorter axles)</i>	2500871
	<i>TerraFlex AT Track only (each)</i>	5500107
	<i>Sprocket Set and Axles</i>	2001799



TerraFlex™ Tracks, Sprockets and Torsion Axle Conversion Kits **NEW**

Convert the track system on a previous model to the TerraFlex AT Tracks. All parts needed for conversion are included in the conversion kit.

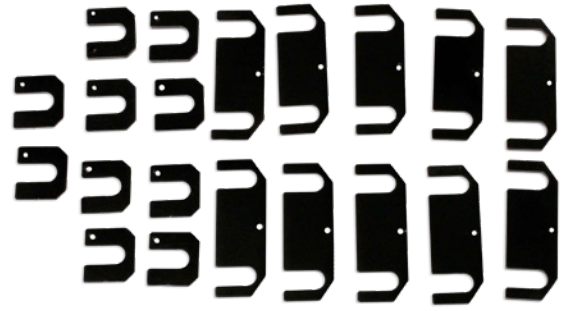
Series		p/n
TSX 561 (2024 & Prior)	<i>TerraFlex AT Track Conversion Kit (includes 2 tracks, Sprocket Set and complete Torsion Axle Assembly)</i>	2500864
	<i>TerraFlex AT Track only (each)</i>	5500106
TRX 766 (2024 & Prior)	<i>TerraFlex AT Track Conversion Kit (includes 2 tracks, Sprocket Set and complete Torsion Axle Assembly)</i>	2500872
	<i>TerraFlex AT Track only (each)</i>	5500107
	<i>Sprocket Set (set of 2)</i>	2001801
	<i>Torsion Axle Assembly</i>	2001641



Track Tension Shim Kit

Maintaining the recommended track deflection is imperative to the life and functionality of the track, and to the operation of the transmission. Shim kits include a variety of different shims to achieve the proper deflection.

Series		p/n
TRX	354 model	2500462
TSX / TRX	561 / 610 / 660 / 766 models	2500685



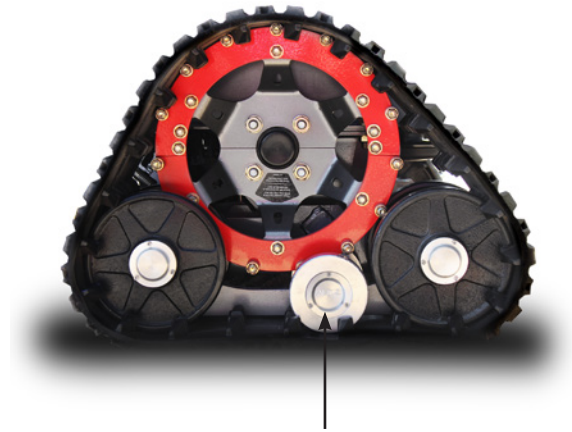
TRX 354 Shim Kit (p/n 2500462) shown

Idler Wheel Kit

Center idler wheel kit increases the track's footprint and the down pressure in the middle portion of the track, resulting in reduced turf impact and a smoother overall ride.

Application: For TRX 354 models with an idler wheel carrier that has a hole in the center for a third axle; for models without the hole in the idler wheel carrier, order two (2) Idler Wheel Carriers (p/n 1201055-540) to facilitate the third axle.

Series		p/n
TRX	354 model	2500669

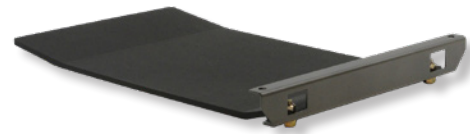


Idler Wheel Kit

TRX Debris Shield Kit

Rear Debris Shield - This debris shield adds 10" of protection to undercarriage components. Made with thick high density poly material.

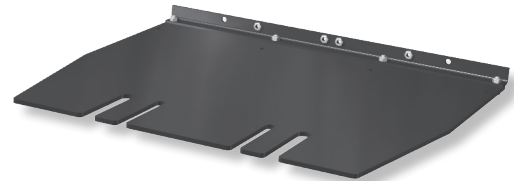
Series		p/n
TRX*	610 / 660 / 766 models	2500384



Rear Shield

Deck Debris Shield - This debris shield adds 23" of protection to undercarriage components. Made with thick high density poly material.

Series		p/n
TRX*	610 / 660 / 766 models	2500383



Deck Shield

Deck Debris Shield with Side Shields - This debris shield adds 34" of protection to undercarriage components and side shields to keep debris from entering track drive. Made with thick high density poly material.

Series		p/n
TRX*	766 AT model	2500694



Debris Shield with Side Shields

*Compatible with All-Terrain decks only

Slope Meter

Easy-to-read slope meter takes the guess work out of slope gradient assessment.

Series		p/n
XR/XE/TRX	All models	2500439



Utility Plow

Hydraulic utility plow with 7 gauge trip frame superstructure. Features an adjustable 72" moldboard with 48" trip frame.

- Powerful all-hydraulic control quickly adjusts plow lift and angle. Hand-held controller with illuminated buttons allows for one hand control of the plow from the driver's seat.
- 6" reversible cutting edge extends life and allows even wear.
- Adjustable shoes intended for snow plow.

Plow Kit includes snow plow, all wiring, mounting brackets and hardware.

Series		p/n
TRX 610 / 660 / 766 (2024 and prior models)	Plow Kit	2500399
	Snow Deflector Kit	2500402
	Boarding Step	2500401
	Snow Plow Shoe Pair	2900615



Spreader

For light rock salt, fertilizers and fine material grade applications.

- 3.0 cubic feet/180 lb. capacity.
- 10" steel spinner with 4-20 ft. spreading width.
- High-density UV protected polymer with modular steel frame.

Spreader Kit includes all wiring, mounting brackets and hardware.

Series		p/n
TRX 610 / 660 / 766	Spreader Kit	2500400
	Spreader Cover	2500403
	Spreader Deflector	2500412



Collection System with Dump Box

Large-capacity collection system is an effective and efficient way to collect grass clippings and leaves. The dump box hopper holds up to 12 cubic feet (9.6 bushels) and allows the operator to release yard waste right from the mower seat. Kit includes dump box, frame, blower, mounting hardware, receiver hitch and front weights.

Series		p/n
XC	540 models	2500220
	610 models	2500221
	720 models	2500222
XP HD / TRX*	540 models	2500322
	561 / 610 models	2500323
	660 / 766 models	2500324
	720 models	2500440

**Not compatible with TRX All-Terrain decks. Fits Side Discharge Finish Decks only.*



Collection System

Large-capacity collection system is an effective and efficient way to collect grass clippings and leaves.

- Capacity of 10 cubic feet (8 bushels) on XR, XE and TRX (354 model), 15 cubic feet (12 bushels) on XP, XP HD, XC and TRX models (excluding TRX 354 model)
- Heavy-duty large diameter wheel with five 7-gauge fan blades rotate on ball bearings.
- Angled and reinforced leading edge blower housing.
- Convenient tool-free mounting hardware for quick and easy one-person installation and removal.

Kit includes bags, frame, blower, mounting hardware, receiver hitch and front weights. **2500290-550 (silver) is required if front suspension kit is installed and on SS models.*

Series		p/n
XR / XE	480 models	2500150
	540 models	2500151
	610 models	2500152
XP HD	540 models	2500303
	610 models	2500304
	660 models	2500305
	720 models	2500441
XC	540 models	2500130
	610 models	2500131
	720 models	2500132
TRX*	354 models	2500151
	561 models	2500304
	610 models	2500325
	660 / 766 models	2500326

**Not compatible with TRX All-Terrain decks. Fits Side Discharge Finish Decks only.*



8 Bushel Capacity



12 Bushel Capacity

Independent Front Suspension

The Altoz Independent Front Suspension (IFS) is the industry’s first parallel twin A-arm front suspension. Features adjustable coil springs over gas shocks that are finely-tuned for precise compression and rebound, the Altoz IFS smooths out rough terrain and allows operators to mow faster with superb comfort and control. Available for 2016 and newer models.

Series		p/n
XR / XE / TRX 354	354 / 480 / 540 models	2500183-550
	610 models	2500208-550



Light Kit

Two LED lights built in an aluminum, shock-proof and waterproof casing. Each light provides 950 lumens with a spot beam of 25 degrees. Kit includes all wiring, mounting brackets and hardware.

Series		p/n
XR / XE / TRX 354	All models	2500313
XC / XP Z / XP S	All models	2500087
XP HD / XP RD / TRX	540 / 561 / 610 / 660 / 720 / 766 models	2500394
TSX	561 models	2500680

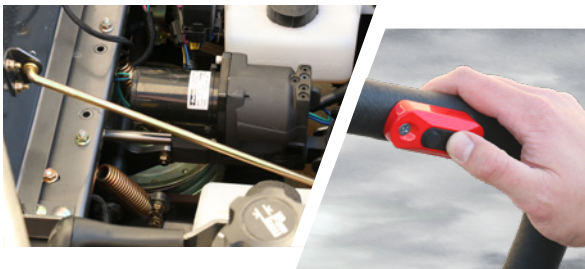


XC Model Shown

Power Deck Lift with Steering Lever Mounted Control

The power deck lift with conveniently located steering lever mounted controls allows for quick and easy deck height adjustments without having to take your hand off the steering lever. Kit includes steering handle assembly, actuator, wiring harness, and all mounting brackets and hardware. Available for 2016 and newer models.

Series		p/n
XC	All models	2500184
XP HD / XP RD / TRX	540 / 561 / 610 / 660 / 720 / 766 models	2500330



Power Splitter

Required when more than one power accessory is installed on the mower.

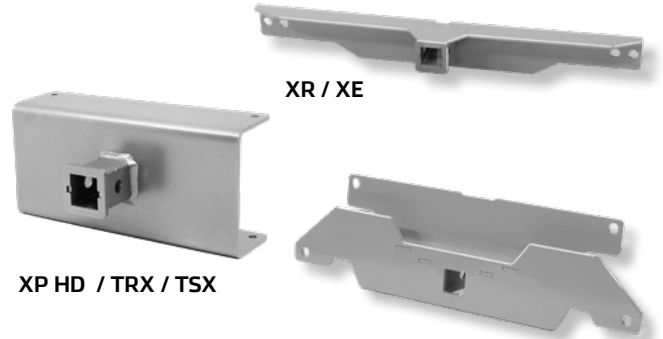
Series		p/n
All series	All models	2001041



Front Receiver Hitch Kit (1-1/4 in.)

Hitch mounts onto front or over Independent Front Suspension. Features standard 1-1/4" x 1-1/4" trailer hitch receiver.

Series			p/n
XR / XE / TRX 354	Standard	Silver	2500227-550
	With front suspension	Silver	2500290-550
XP HD / XP RD / TRX / TSX	561 / 610 / 660 / 766 models		2500499



XR / XE

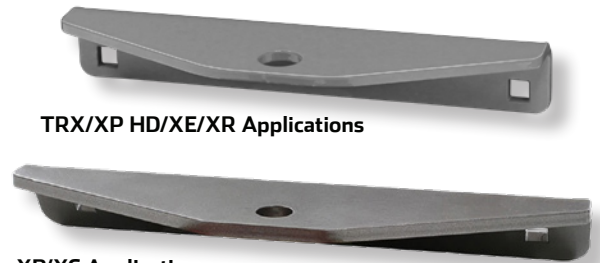
XP HD / TRX / TSX

With Independent Front Suspension

Standard Hitch Kit

Standard hitch mounts easily on the bumper. Features a 5/8" opening for drop pin.

Series			p/n
XR / XE / XE HD / XP HD / XP RD / TRX	All models	Black Chrome	2500163-540
XC	All models		2500084



TRX/XP HD/XE/XR Applications

XP/XC Applications

Rear Receiver Hitch Kit (1-1/4 in.)

Super-strong hitch mounts easily over the bumper. Features standard 1-1/4" x 1-1/4" trailer hitch receiver.

Series			p/n
XR / XE / XE HD	All models	Black Chrome	2500226-540
XP Z / XP S	All models		2500081
XC	All models		2500080
XP HD / XP RD / TRX	354 models	Black Chrome	2500226-540
	540 / 561 / 610 / 660 / 720 / 766 models		2500333



XR / XE / XP HD /
TRX Applications

XP Z / XP S / XC Applications

MOWER > ACCESSORIES & ATTACHMENTS

Discharge Cover Kit

Operator controlled discharge cover allows you to quickly open and close the baffle while mowing. The discharge cover is constructed of 10 gauge steel.

Series		p/n
XR / XE / XE HD	480 models	2500160
	540 models	2500161
	610 models	2500162
XP HD	540 / 610 / 660 / 720 models	2500336
XC	540 models	2500146
	610 models	2500147
	720 models	2500148
TRX*	354 models	2500161
	561 / 766 models	2500336
TSX*	561 models	2500336

**Not compatible with TRX/TSX All-Terrain decks, fits Side Discharge Aero Deck™ only.*



XC Model Shown

Rear Deck Wheel Kit

Easy to install rear deck wheels for extra balance to prevent scalping on uneven ground. Kit includes two deck wheels and all mounting brackets and hardware.

Series		p/n
XE / XE HD	610 models	2500406
XP HD	610 / 660 models	2500378



Canopy with Fan **NEW**

Designed with your comfort in mind, this canopy with built-in fan provides a cool breeze and shelter from the sun's rays to keep you comfortable while mowing. With the Altoz Canopy with Fan, you can focus on the task at hand without worrying about the weather.

Series		p/n
XP HD / XP RD / XC / TRX	All models with ROPS	2900756



Suspension Seat

Suspension seat adjustable for rider comfort with high back, arm rests and fore and aft adjustment.

Series		p/n
XE / XP / XC / TRX	All models	2900592



Operator Assist Handle Kits **NEW**

The Altoz Operator Assist Handle Kit is engineered for enhanced safety and convenience while operating your mower. Designed with your comfort and security in mind, this accessory offers a stable and reliable grab bar for easy mounting and dismounting. Say goodbye to awkward maneuvers and potential slips – with the Operator Assist Handle, getting on and off your mower becomes a seamless and secure experience.

Series		p/n
XR / XE / XE HD	All models	2500803
XP / XP HD / XP RD	All models	2500809
TRX	TRX 354	2500803
	TRX 561	2500809
	TRX 766 (Models prior to 2025 with silver front axle)	2500810
	TRX 766 (2025 models with black chrome front axle) s/n XT726285 and higher	2500868



Shown installed on XP 610 HDi - configuration varies per model

Armrest Kit

Optional armrests for additional rider comfort. Available for XR models.

Series		p/n
XR	2017 and newer models	2900517



Steering Lever Extension Kit

Provides additional adjustments of the steering levers to make your mowing experience as comfortable as possible.

Series		p/n
All series	All models	2500616



MOWER > ACCESSORIES & ATTACHMENTS

Bucket Holder Kits **NEW**

The Altoz Bucket Holder is the ultimate companion for your mowing adventures. Designed with practicality in mind, this innovative accessory revolutionizes the way you tackle outdoor tasks. With the ability to securely carry a standard 5-gallon bucket on the front of your mower, convenience is at your fingertips. Whether you're transporting tools, supplies or refreshments, this kit ensures everything you need is within reach as you navigate your lawn. The Bucket Holder Kit is not compatible with the Front Weight Kit.

Series		p/n
XE / XR	All models	2500808
XP / TSX	All models	2500807
TRX	TRX 354	2500808
	TRX 561 / 766	2500807



Flat-Free Tire

Save time and money when you don't have to stop for a leaking tire. Altoz flat-free tires keep your mower rolling over the toughest conditions, and have the feel of a pneumatic tire without ever going flat.

Part number shown is for a single tire and rim assembly. Two needed for each mower.

Series		p/n
XE / XE HD / XP Z / XP S	All models	2500100
XP HD	s/n 108078 and lower	2500100
XP RD		2500719
XC	All models	2500099



Front Weight Kit

Adds extra weight to counterbalance heavy rear attachments and provide greater stability. The Front Weight Kit is not compatible with the Bucket Holder Kit. *2500290-550 (silver) is required for SS models or if front suspension kit is installed.

Series		p/n
XR / XE / XE HD / XP HD / XP RD	All models	2000725-540
XC	All models	2001435
TRX / TSX	354 models	2000725-540
	540 / 561 / 610 / 660 / 720 / 766 models	2000857



XR/XE/XE HD Applications



XC/XP HD/TRX/TSX Applications

Mulch Kit

The mulch kit isolates the cutting chambers to effectively process clippings, recycling them and reclaiming the nutrients. Kit includes three mulching blades.

Not compatible with All-Terrain Deck

Series		p/n
XR / XE HD	480 models	2500199
	540 models	2500200
	610 models	2500201
XE	480 models s/n XE109403 and higher	2500199
	540 models s/n XE109403 and higher	2500200
	610 models s/n XE109403 and higher	2500201
XC	540 models s/n XC105610 and higher	2500209
	610 models s/n XC105610 and higher	2500210
	720 models s/n XC105610 and higher	2500211
XP HD / TRX	354 models	2500200
	540 models	2500306
	540 models s/n 108078 and higher	2500520
	561 / 610 models	2500307
	561 models s/n 523525-523531, 523541 and higher	2500521
	610 models s/n 108078 and higher	2500521
	660 / 766 models	2500308
	660 models s/n 108078 and higher	2500522
	766 models s/n 723707 and higher	2500522
	720 models	2500442
TSX	720 models s/n 108180 and higher	2500523
	561 models	2500521

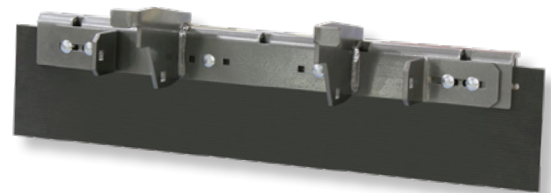


Lawn Striping Kit

Stripe or create more complex patterns in the lawns you mow. Includes flexible rubber striper and all mounting hardware.

Not compatible with All-Terrain Deck

Series		p/n
XR / XE / XE HD	All models	2500149
XP Z / XP S / XC	All models	2500139
XP HD / TRX / TSX	354 models	2500149
	540 / 561 / 610 / 660 / 720 / 766 models	2500332



Altoz Blade Height Tool **NEW**

Quickly and accurately check the mowing height of the blades with this tool that is custom laser-cut from 14-gauge steel and features the ALTOZ name. Powder-paint coated Altoz red for durability and recognition. Notched with 1/4" increments from 1-1/2" up to 5-1/2" cutting height.

Series	Description	p/n
ALL	Altoz Blade Height Gauge	3108561-511



HV All-Terrain Replacement Blades Kit

Altoz replacement blades with swing away design provide maximum cut quality in all types of terrain.
Always replace HV All-Terrain blades in pairs using new hardware. Part number shown is for two blades with fasteners (six blades required for each HV All-Terrain Deck).

Series		p/n
TRX / TSX	All models	2500779



Dual Edge All-Terrain Replacement Blade and Hub Assembly **NEW**

Altoz dual edge all-terrain replacement blades with swing away design provide maximum cut quality in all types of terrain. Included blade hub and hardware.
Three hub assemblies required for each HV All-Terrain Deck.

Series		p/n
TRX	660 / 766 Models	2001621
TRX / TSX	561 / 610 Models	2001628



Gator Mulching Replacement Blades

Authorized Altoz replacement blades are designed for superior grass processing whether you are mulching, side discharging or bagging. Gator Mulcher G6 blades feature Fusion Technology (ultra-hard tungsten carbide layer on the cutting edge) for superior longevity and cut quality, even in the most punishing conditions.

Gator Mulcher G3 blade with 5/8" bore can be used on TRX 354, XR, XE, and XP Z/XP S models.

Gator Mulcher G6 blade with 15/16" bore can be used on XP HD, XC, TRX, and TSX finish cut models (excluding TRX 354).

Part number shown is for a kit of three blades. Three blades required for each mower.

Series		p/n
XR / XE / XE HD / XP Z / XP S	480 models (17" G3 blade)	2500530
	540 models (19" G3 blade)	2500531
	610 models (21" G3 blade)	2500532
XP HD / XP RD / XC / TRX / TSX	354 models (19" G3 blade)	2500531
	540 models (19" G6 blade)	2500533
	561 / 610 models (21" G6 blade)*	2500534
	660 / 766 models (22-1/2" G6 blade)*	2500535
	720 models (24-1/2" G6 blade)	2500536

*All-Terrain Deck requires HV All-Terrain straight blade kit.



Gator Mulcher G3 Blade Kit
(Includes 3 blades)



Gator Mulcher G6 Blade Kit
(Includes 3 blades)

Mulching Replacement Blades

Authorized Altoz replacement blades are designed for superior grass processing whether you are mulching, side discharging or bagging. 5/8" bore on TRX 354, XR, XE, and XP Z/XP S models. 15/16" bore on XP HD, XC, and TRX finish cut models (excluding TRX 354).

Part number shown is for a kit of three blades. Three blades required for each mower.

Series		p/n
XR / XE / XE HD / XP Z / XP S	480 models (17" blade)	2500537
	540 models (19" blade)	2500538
	610 models (21" blade)	2500539
XP HD / XP RD / XC / TRX	354 models (19" blade)	2500538
	540 models (19" blade)	2500540
	561 / 610 models (21" blade)*	2500541
	660 / 766 models (22-1/2" blade)*	2500542
	720 models (24-1/2" blade)	2500543

*All-Terrain Deck requires HV All-Terrain straight blade kit.



Mulching Blade Kit
(Includes 3 blades)

High Lift Replacement Blades

Authorized Altoz replacement blades are designed to provide high lift to maximize cut quality. 5/8" bore on TRX 354, XR, XE, XE HD, and XP Z/XP S models. 15/16" bore on blades for XP HD, XC, TRX, and TSX finish cut models (excluding TRX 354). Heavy Duty blades feature Fusion Technology (ultra-hard tungsten carbide layer on the cutting edge) for superior longevity and cut quality, even in the most punishing conditions.

Part number shown is for a kit of three blades. Three blades required for each mower.

Standard Duty

Series		p/n
XR / XE / XE HD / XP Z / XP S	480 models (17" blade)	2500544
	540 models (19" blade)	2500545
	610 models (21" blade)	2500546
XP HD / XP RD / XC / TRX	354 models (19" blade)	2500545
	540 models (19" blade)	2500547
	561 / 610 models (21" blade)*	2500548
	720 models (24-1/2" blade)	2500549

*All-Terrain Deck requires HV All-Terrain straight blade kit.

Heavy Duty

Series		p/n
XP HD / XP RD / XC / TRX / TSX	540 models (19" blade)	2500550
	561 / 610 models (21" blade)*	2500551
	660 / 766 models (22-1/2" blade)*	2500552
	720 models (24-1/2" blade)	2500553

*All-Terrain Deck requires HV All-Terrain straight blade kit.



High Lift (Standard Duty) Blade Kit
(Includes 3 blades)



High Lift (Heavy Duty) Blade Kit
(Includes 3 blades)

Medium Lift Replacement Blades

Authorized Altoz replacement blades are designed for maximum cut quality. 5/8" bore on TRX 354, XR, XE, and XP Z/XP S models. 15/16" bore on blades for XP HD, XC, TRX, and TSX finish cut models (excluding TRX 354).

Part number shown is for a kit of three blades. Three blades required for each mower.

Series		p/n
XR / XE / XE HD / XP Z / XP S	480 models (17" blade)	2500554
	540 models (19" blade)	2500555
	610 models (21" blade)	2500556
XP HD / XC / XP RD / TRX / TSX	354 models (19" blade)	2500555
	540 models (19" blade)	2500557
	561 / 610 models (21" blade)*	2500558
	660 / 766 models (22-1/2" blade)*	2500559
	720 models (24-1/2" blade)	2500560

*All-Terrain Deck requires HV All-Terrain straight blade kit.



Medium Lift Blade Kit
(Includes 3 blades)

HV All-Terrain Straight Blades Kit

Kit for installing straight mower blades on TRX and TSX HV All-Terrain deck. Kit includes three blade bolts with fasteners.

Mower blades not included in kit. Medium lift blades are recommended for use with all HV All-Terrain straight blade kits: p/n 2500559 recommended for TRX HV All-Terrain deck and p/n 2500558 recommended for TSX HV All-Terrain deck.

Series		p/n
TRX	All models	2500427
TSX	561 model	2500645



Touch-Up Paint

Color-matched Altoz paint allows easy application for nicks or scrapes that need touch-up.

Color		p/n
Altoz Red	.6 oz. container	4500046
	4.5 oz spray container	4500120
Silver	.6 oz. container	4500048
	4.5 oz spray container	4500122
Textured Silver	.3 oz. paint pen	4500252
	.6 oz. container	4500254
	4.5 oz spray container	4500256
Black Chrome	4.5 oz. spray container	4500221
Textured Black Chrome	.3 oz. paint pen	4500251
	.6 oz. container	4500253
	4.5 oz spray container	4500255



Mower Lift **NEW**

The 750 XT Lift provides a safe and convenient solution for lifting your Altoz machines for tasks like blade maintenance, deck maintenance and more. Featuring a screw jack and safety-lock pin system, it ensures stability and prevents equipment from slipping during maintenance. The lift can be raised using a drill and folds flat for easy storage.

- Lifting capacity: 750-lbs. (lifting the front of the mower, not the total mower weight)
- Lifting height: 25 in.
- Wheel span measurement: 31.5 in. to 62.5 in. outside front wheel measurement
- Easily lifted with one hand or a power drill
- Folds flat for easy, compact storage

Series		p/n
All Series	All Models	2900803



Transaxle Service Kits

Keep your Altoz mower's transmissions running and in top shape by performing routine maintenance. The Transaxle Service Kits contain everything you need for your model to optimize performance and extend the transaxles life. With oil formulated specifically for Altoz drive systems, you can expect your unit to continue to perform under a wide variety of demanding conditions.

Series		p/n
XR / XE / XP	All models	2500722
TRX	354 models	2500722
XP HD / XC	All models	2500723
TRX	561 / 610 / 660 / 766 models	2500723



XR/XE/XP/TRX 354 Applications



XC/XP HD/TRX 561/610/660/766 Applications

Undercarriage Overhaul Kit

Overhaul kit includes angular contact bearings, seals and O-rings for the complete undercarriage idler wheels on TRX & TSX models.

Series	p/n
TRX / TSX	2500846



Hi-Vis Vest

This Hi-Vis Vest is color-blocked with black trim, has a zipper closure, 2" silver tape reflective material and one horizontal stripe, left shoulder mic tab, upper left front chest pocket, lower right and left outside pockets and is 100% polyester mesh. This vest is economical, making it an excellent choice for extreme work environments that reduce the life of the vest, and short term labor.

Color: Safety Green / Black

Sizes: L, X, XX, XXX

9500402



Performance Long Sleeve T-Shirt

Port & Company® long sleeve performance blend t-shirt has a soft cotton feel paired with Dry Zone® moisture-wicking technology for unbeatable comfort and performance. 4.5-ounce, 65/35 poly/cotton. Removable tag for comfort and hemmed cuffs. Altoz logo and "Always Ahead" tagline screen printed on the front and the left arm.

Color: Jet Black

Sizes: S, M

9500324 (S-M)



Color Block Twill Shirt

This 65/35 cotton and polyester twill shirt has piping in contrast at the shoulders and sleeves. Includes a pen-slotted pocket. Altoz logo and "Always Ahead" tagline embroidered on left chest.

Color: Black / Carbon

Sizes: S, M, L, X, XXX

9500378 (S-XXX)



Voyageur Hoodie

This 6.7 oz. performance hoodie is made of 92% cationic polyester and 8% spandex. It includes a kangaroo pocket, metal grommets for strings, set-in sleeves and a scuba neck. Altoz logo is stitched twill applique and "Always Ahead" tagline is embroidered.

Color: Red

Sizes: S, M, L

9500379 (S-L)



Altoz Crewneck Sweatshirt

This 7 oz fleece crew is designed for comfort and built to last. The inside fleece is brushed for added softness and warmth. This sweatshirt consists of 60% cotton, 40% polyester with rib knit neck trim, cuffs & waistband. Altoz logo and "Always Ahead" tagline screen-printed on front chest.

Color: Crimson

Sizes: S, M, L, X, XX, XXX

9500407 (S-XXX)



Telemark Softshell

Elevate your style and comfort with the Cutter & Buck Clique Men's Narvik Colorblock Softshell Jacket. Crafted with precision and attention to detail, this water-resistant jacket combines flexibility and durability with its 96% polyester 45% spandex blend. The microfleece lining provides cozy warmth, while the sleek colorblock design adds a modern touch. With convenient features like a secure zipper closure and zippered pockets, this versatile jacket is perfect for any occasion, keeping you stylish and protected. Altoz logo and Always Ahead tagline embroidered on front left chest.

Color: Red / Black

Men's Sizes: S, M, L, X, XX, XXX, XXXX, XXXXX

9500389 (S-XXXXX)

Ladies sizes: S, M, L, X, XX, XXX

9500394 (S-XXX)



Men's

Ladies

Gray & Red Mesh Back Cap

This Richardson cap is a perfect fusion of classic design and modern comfort. Made from a premium blend of 60% cotton and 40% polyester, this iconic trucker cap promises breathability and durability for all-day wear. This cap features a 100% polyester mesh back, pre-curved contrast stitched visor and a snapback closure. Altoz logo and "Always Ahead" tagline on front in silicone.

Color: Gray / Red

9500386



Gray & Black Mesh Cap

Featuring a pre-curved sandwich visor with nylon mesh back panels and contrast stitching on the front two panels and visor. Available with either a Velcro or snap back closure. Altoz logo on front, "Always Ahead" tagline on visor and red triangle on back - all elements embroidered.

Color: Black / Gray

9500342



Altoz Neck Gaitor

Show off the Altoz brand with this multi-use headwear - use it as: face mask, bandana, headband, or hairband. Due to its tube stretchy material you can wear it any way possible and it will fit everyone's head. Altoz logo and "Always Ahead" tagline dye sublimated into fabric.

Color: Red

9900430



NOTES



2025 MOWER ACCESSORIES & ATTACHMENTS CATALOG

Color Disclaimer: Every effort is made to present the colors as accurately as possible. Actual colors may vary from the colors you see in this publication due to the limitations and inconsistencies of various printing processes.